

**DESOI M-Power 30Z KIT**

**No. 500-15-008**

Starter kit for mineral injection using microfine cement on concrete surfaces of medium and small sizes with various types of cracking.



**Contents of the KIT**

|                         |  |
|-------------------------|--|
| <b>EQUIPMENT</b>        | ① <b>DESOI M-Power 30Z (No. 10759)</b><br>2 litre material container transparent, 2 m fabric hose Ø 6 mm, manometer 0 - 25 bar, LP ball valve R1/4" with DESOI Z-Slider, incl. instruction manual  |
|                         | ④ <b>Klebfix (No. 25260)</b><br>Tool to hold adhesive packer to apply the adhesive economically.   |
| <b>CONSUMABLES</b>      | ⑦ <b>Sikadur®-31+ (No. 000-02-939)</b><br>Very low-emission 2-component epoxy resin adhesive for friction bonding and for concrete repairs.  |
|                         | ④ <b>Universal adhesive packer - polymer (No. 400-32-035)</b><br>The shut-off slide valve can be opened and closed - injection to ZTV-ING. The specific material properties of the adhesive packer enhance the bond between the adhesive and the packer's adhesive surface. The adhesive is applied to the adhesive surface of the packer using Klebfix (approx. 6 g). |
|                         | ⑤ <b>Steel nail (No. 500-13-415)</b><br>The steel nail is used to secure the adhesive packer and keeps the injection channel open.   |
| <b>FILLING MATERIAL</b> | ⑧ <b>Microfine cement (No. 56397)</b><br>DESOI microfine cement VP1 is a mineral, 1-component microfine cement suspension with a maximum grain size of < 0.1 mm.   |
| <b>MIXING EQUIPMENT</b> | ③ <b>Dissolver set (No. 000-03-385)</b><br>3 x Polymer dissolver disc Ø 100 mm, 1 x steel bar AF10 x 500 mm<br>The dissolver mixer is suitable for producing homogeneous mixtures. Due to a low bubble formation and an easy dismantling, it allows an efficient and clean working process. It can be used with all standard drills and cordless screwdrivers.         |
|                         | ② <b>Mixing container (No. 500-13-424)</b><br>Polymer container with a semi slotted cover<br><i>Tip: To achieve a better mixing result, position the dissolver mixer laterally within the slot.</i>  |

**Procedure**

- Grease a steel nail and drive it into the crack
- Insert the adhesive packer into the crack and apply the adhesive
- Place the adhesive packer over the steel nail on the crack
- Apply sealing material
- Observe the curing time of the adhesive
- Remove steel nail
- Mix the ultra-fine cement with the dissolver mixer
- Fix the DESOI Z-Slider to the packer and inject using the DESOI M-Power 30Z



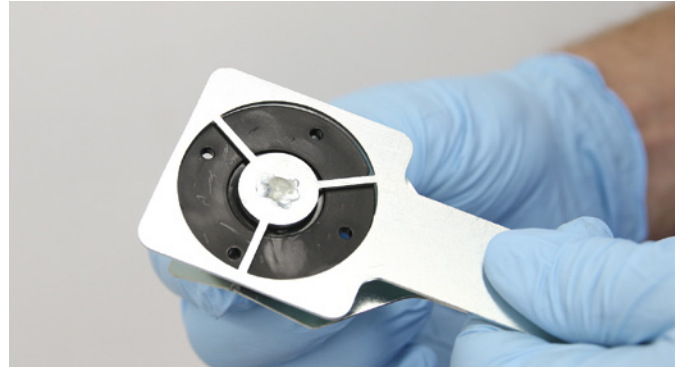
Application video

## Application

### Universal adhesive packer - polymer (No. 400-32-035) and Klebfix (No. 25260)



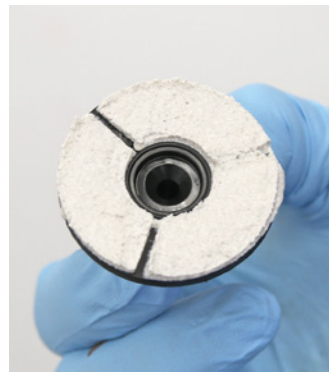
Universal adhesive packer - polymer



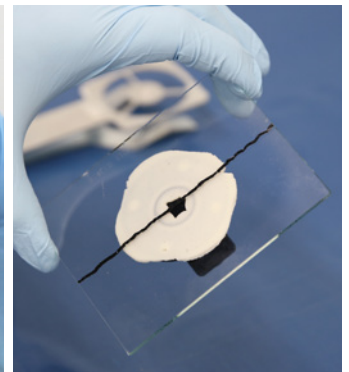
Insert the adhesive packer into the Klebfix



Apply the adhesive (Sikadur®-31+)



The adhesive surface is ready; access to the crack is maintained



Adhesive packer placed on the adhesive surface

### DESOI Z-Slider (No. 16896)



Slide the DESOI Z-Slider onto the pan head nipple



The DESOI Z-Slider locks into place when the clamping lever is pressed down

### Mixing container (No. 500-13-424) and Dissolver set (No. 000-03-385)



Position the dissolver mixer laterally within the slot



Application video